

This annual shareholder report contains important information about RiverFront Dynamic US Dividend Advantage ETF (the "Fund" or "RFDA") for the period of December 1, 2023 to November 30, 2024 (the "Period"). You can find additional information about the Fund at <https://www.alpsfunds.com/exchange-traded-funds/rfda>. You can also request this information by contacting us at 1-866-759-5679.

## WHAT WERE THE FUND COSTS FOR THE PAST YEAR? (based on a hypothetical \$10,000 investment)

	Costs of a \$10,000 Investment	Costs Paid as a Percentage of a \$10,000 Investment
RiverFront Dynamic US Dividend Advantage ETF	\$60	0.52%

## Comparison of change in value of a \$10,000 investment in the Fund and the Index

The Fund's past performance is not a good predictor of the Fund's future performance. The chart and the table below do not reflect the deduction of taxes that a shareholder would pay on Fund distributions or sale of Fund shares.

## HOW DID THE FUND PERFORM FOR THE PERIOD AND WHAT IMPACTED ITS PERFORMANCE?

### Performance Highlights

The RiverFront Dynamic US Dividend Advantage Fund returned 30.90% at net asset value for the 12 months ended 11/30/24. The fund underperformed its benchmark, the S&P 500 Index, which returned 33.89% over the same period.

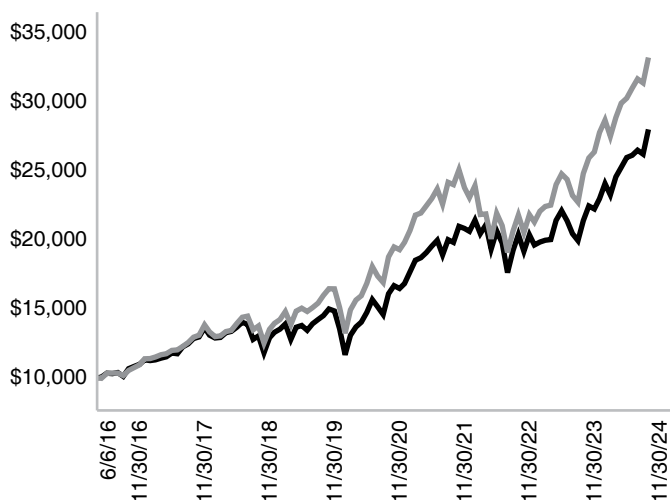
#### • Top contributors to relative performance:

- Underweight allocation to the Healthcare sector
- Security selection within the Energy sector
- Security selection within the Technology sector

#### • Top detractors from relative performance:

- Security selection within the Financials sector
- Overweight allocation to the Energy Sector
- Underweight allocation to the Technology Sector

— RiverFront Dynamic US Dividend Advantage ETF (NAV) - \$28,002  
— S&P 500® Index - \$33,211



## Average Annual Total Returns (as of November 30, 2024)

	1 Year	5 Year	Since Inception (06/06/2016)
RiverFront Dynamic US Dividend Advantage ETF - NAV	30.90%	14.06%	12.90%
S&P 500® Index <sup>‡</sup>	33.89%	15.77%	15.20%

For the most current month-end performance data please visit [www.alpsfunds.com](https://www.alpsfunds.com) or call 1-866-759-5679.

<sup>‡</sup> This index represents a broad measure of market performance for purposes of new regulatory requirements.

## WHAT ARE SOME KEY FUND STATISTICS?

Net Assets	\$78,555,643
Number of Portfolio Holdings	71
Portfolio Turnover Rate	28%
Total Advisory Fees Paid	\$391,856

## WHAT DID THE FUND INVEST IN?

### Top Ten Holdings\*

NVIDIA Corp.	9.80%
Apple, Inc.	8.17%
Microsoft Corp.	7.65%
Amazon.com, Inc.	4.24%
Perdoceo Education Corp.	2.41%
Alphabet, Inc.	2.22%
International Business Machines Corp.	1.87%
Cisco Systems, Inc.	1.77%
Hewlett Packard Enterprise Co.	1.77%
US Bancorp	1.74%
Total % of Top 10 Holdings	41.64%

### Asset Allocation\*

Information Technology	32.12%
Financials	18.60%
Consumer Discretionary	11.67%
Energy	8.36%
Industrials	6.68%
Real Estate	6.61%
Communication Services	3.64%
Utilities	3.63%
Consumer Staples	2.82%
Materials	2.45%
Health Care	1.70%
Money Market Fund	1.72%
Total	100.00%

\* % of Total Investments (excluding investments purchased with collateral from securities loaned).

Holdings are subject to change.

## WHERE CAN I FIND ADDITIONAL INFORMATION ABOUT THE FUND?

If you wish to view additional information about the Fund, including but not limited to the Fund's prospectus, financial information, holdings, and proxy voting information, please visit <https://www.alpsfunds.com/exchange-traded-funds/rfda>.

## HOUSEHOLDING

The Funds send only one report to a household if more than one account has the same address. If you do not want this policy to apply to you, or if you wish to receive a copy of this document at a new address, contact 1-866-759-5679.

